



LONG ASHES

PARK



5 Thorpe View Luxury Holiday Home

Price: £368,000

Description

5 Thorpe View at Long Ashes Park is a sanctuary of modern luxury nestled within the breath-taking landscape of the Yorkshire Dales. This stunning lodge, built in 2020, combines the tranquillity of its picturesque surroundings with the finest in contemporary design and comfort. As you step inside, you're greeted by a spacious, open-plan living area that effortlessly flows from the lounge to the dining space and kitchen. The vaulted ceilings and expansive sliding patio doors flood the room with natural light, creating a warm and inviting atmosphere. The living area is the perfect place to relax, with a large L-shaped sofa positioned in front of a cosy wood-burning fire, ideal for those chilly Yorkshire evenings.

The kitchen is a chef's dream, boasting high-end Bosch appliances, ample storage, and sleek countertops that provide both functionality and style. Whether you're preparing a quick breakfast or a gourmet dinner, the kitchen's thoughtful design makes cooking a joy. Adjacent to the kitchen, the dining area features a large rectangular table surrounded by luxurious leather chairs, making it an ideal space for entertaining family and friends.

The lodge offers two beautifully appointed bedrooms, each designed with relaxation and privacy in mind. The master suite is a true retreat, featuring a king-size bed, a walk-in dressing room, and a freestanding dressing table. The ensuite bathroom is a haven of luxury, with a large walk-in shower, a sleek oval basin sink, and a heated towel radiator. The second bedroom is equally inviting, with a king-size bed, a spacious double wardrobe with sliding mirror doors, and a large wall-mounted TV, providing guests with their own private haven.

Outside, the lodge's private decking offers the perfect spot to enjoy the stunning views over the Wharfedale valley. Whether you're soaking in the luxury hot tub, hosting a barbecue, or simply enjoying a quiet morning coffee, the outdoor space is designed for ultimate relaxation. The lodge also includes a large storage shed, providing ample space for outdoor equipment, and private parking.

5 Thorpe View is not just a holiday home; it's an exquisite retreat where every detail has been carefully considered to provide a luxurious and comfortable living experience. With its blend of modern amenities and natural beauty, this lodge offers a unique opportunity to enjoy the best of the Yorkshire Dales in style and comfort.

Property Details:

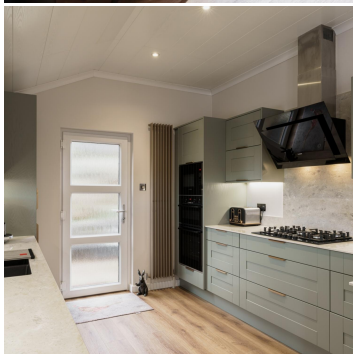
- **Location:** Long Ashes Park, Threshfield, North Yorkshire
- **Size:** 46ft x 22'3ft
- **Year Built:** 2020
- **Bedrooms:** 2 (Master with walk-in robe)
- **Bathrooms:** 2 (Including one en-suite)

Key Features:

- **Spacious Open Plan Living:** Enjoy a large, open plan living area perfect for relaxation and entertaining. The space is beautifully designed to maximise light and comfort.
- **Custom Designed Kitchen:** The kitchen is custom designed with high-quality finishes, offering ample storage and modern appliances, making it a dream for any home cook.
- **Cosy Wood Burner:** The living area includes a stylish wood burner, adding warmth and charm to the space, perfect for cosying up on chilly evenings.
- **Utility Area:** Convenient utility area with a stacked washing machine and tumble dryer, ensuring all your laundry needs are met.
- **Private Decking:** Step outside onto your private decking, ideal for outdoor dining, barbecues, or simply soaking in the stunning natural surroundings of the Yorkshire Dales.
- **Private Parking:** The property includes private parking for your convenience.

Located in the picturesque Long Ashes Park, this lodge offers a perfect blend of luxury and tranquillity. Whether you're looking for a peaceful retreat or a holiday home, 5 Thorpe View provides an idyllic escape in the heart of the Yorkshire Dales.

Don't miss the opportunity to own this stunning lodge in a sought-after location. Contact us today to arrange a viewing!



Contact Us

Call: 01756 752261

Email: info@longashespark.co.uk

www.longashespark.co.uk

